



Newton
Fund



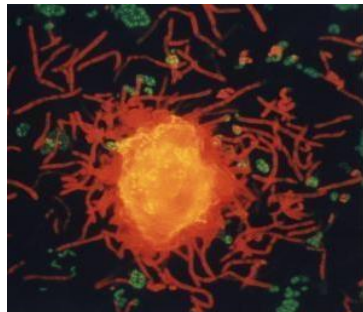
- In 2014, the UK represented just 0.9% of global population, 2.7% of R&D expenditure, and 4.1 % of researchers, while accounting for 9.9% of downloads, 10.7% of citations and 15.2% of the world's most highly-cited articles.
- UK is home to four of the world's top ten universities (Cambridge, Oxford, UCL and Imperial).
- The UK research base is well-rounded and demonstrates excellence in diverse research fields, with activity (as indicated by article outputs) across all major research fields. Its field-weighted citation impact is well above the world average and it continues to rank first amongst comparator countries.
- The UK is a key partner for global research collaboration and researcher mobility with 5.3% of all publications resulting from international collaborations.
- The UK is rated one of the most innovative countries in the world – ranked 5th in the Global Innovation Index.

funding partnership

research & innovation

socio-economic impact

transparent and competitive process



Where



Who



Department for
Business, Energy
& Industrial Strategy



UK Science
& Innovation
Network



Foreign &
Commonwealth
Office

UK Research
and Innovation

EPSRC

Engineering and Physical Sciences
Research Council

MRC

Medical
Research
Council

Innovate UK

Technology Strategy Board



E · S · R · C
ECONOMIC
& SOCIAL
RESEARCH
COUNCIL



**THE
ROYAL
SOCIETY**



The UK and partner countries, through the Newton Fund, will continue to build on existing science and innovation partnerships to **promote the economic development and social welfare of partner countries.**

Everything funded through the Newton Fund will continue to be through an open, transparent and competitive process – **to fund the best people and projects ensuring continued excellence of science and innovation.**



UK - Indonesia Science and Technology Fund



Health and life sciences

Food security

Energy security

Environmental resilience

Sustainable urban development

Science and technology policy

Maritime



The Newton Fund comprises 3 pillar activities





Institutional Links

The objective of this funding scheme is to provide a stimulant for research institutions to kick-start their initial collaboration, which is then strengthened by working together through research preparation work and eventually builds into a sustainable research partnership.

This scheme is also widely used to translate previous joint research collaboration into small pilot projects, or policy outputs.



Leaders in Innovation Fellowship

The Leaders in Innovation Fellowship (LIF) programme brings cohorts of 12 innovators from selected partner countries to the UK for a residential course of training and mentoring in entrepreneurship and commercialisation.

Fellows are jointly selected by the Royal Academy of Engineering and Ristekdikti on the basis of the excellence of their research, the potential of their innovation, the social and economic benefits of their innovation, and their potential as entrepreneurs.



Post-doctoral Programme

The programme provides access for Indonesian researchers to use UK large research facilities at the Rutherford Appleton Laboratory (RAL), Oxfordshire.

The current activities focus in the spectroscopy and neutrons techniques.



Resilience to Hydrometeorological Hazards

Ristekdikti participated in a regionally launched NERC call. The call has closed, the grant awardees have been announced.

The aim of the programme is to improve understanding of the impacts of hydrometeorological hazards, such as floods, droughts, landslides and storm surges, in Indonesia.



Wallacea

The call is part of a wider portfolio of UK-Indonesia science and cultural collaboration to highlight and understand Indonesia's biodiversity as part of a celebration of Alfred Russell Wallace's work in the region. The programme will provide solutions to support effective management, restoration, rehabilitation and exploitation of the region and its biodiversity.



UK Research
and Innovation

Together with the **Medical Research Council** (MRC), DIPI launched a joint call for research proposal under the topic of infectious diseases.

DIPI also participated in the **UKRI Southeast Asia research partnerships call**, at the level of medium-sized grants. The call addresses the field of Tropical Peatlands and Mangroves, as well as Atmospheric Pollution and Human Health.



The Weather and Climate Science for Service Partnership (WCSSP)

This project aims to jointly develop and improve underpinning capability in global and regional forecasting systems, and advance the understanding of high-impact weather events in order to provide better advice of high impact weather events and mitigate the socio-economic impact of these events.

How does it work?

1. JOINT CALLS PROPOSALS ANNOUNCEMENT

Calls will be announced at www.newtonfund.ac.uk and emailed newsletters

2. FIND A UK PARTNER

Access database for the UK researchers can be found at UK Gateway to Research
www.gtr.ukri.org

3. DEVELOP JOINT PROPOSAL & APPLY

Application is filed through UK system for further joint review with Indonesian partner reviewers

4. WHAT DOES THE FUNDING COVER

Newton Fund covers UK researchers, Indonesian partners cover Indonesian researchers

All opened call will be listed at:

www.newtonfund.ac.uk

Contact:

Jane.Aquarisa@fco.gov.uk

newtonfund.id@gmail.com

THANK YOU!

Thank you , any questions?

